



SIGVARIS
GROUP

Easy Ordering Guide

Simplifying the garment finding and fitting process

Jenna Meyer, MBA, OTR/L, CLT-LANA
Central Region Clinical Specialist

October 29, 2024

AGENDA

- Sigvaris Group
- Easy Ordering Guide
 - What is it used for?
 - Why did we develop this?
 - Who is it for?
 - How do I use it?
 - When is this available?
 - Where can I find this?

Who Am I?

Jenna Meyer



MOT from The
University of Kansas
– graduated in 2012



10 years of direct
lymphedema
patient care in
multiple settings



LANA certification in
2020



MBA from the
University of
Memphis in 2023



Goal: helping
patients and
therapists navigate
the world of
compression for
overall improved
outcomes!



SIGVARIS GROUP

Committed to helping feel their best everyday.

SIGVARIS
GROUP

Swiss Heritage

- 1864: Sigvaris was founded as a family-owned company
- Today:
 - Develops & manufactures medical compression products for distribution in over 60 countries on 6 continents
 - Over 1600 employees world wide

Sigvaris USA

- 1997: Compression socks and hosiery manufactured in Peachtree City, Georgia, USA
- 2016: Acquired BiaCare – a leading manufacturer of inelastic wraps, night garments and more manufactured in Holland, Michigan, USA
- 2022: Clinical Specialist team created through Sigvaris investment to support Lymphedema and Lipedema



Clinical Specialists

What is our role?



Educate clinicians on the merits and proper clinical usage of lymphedema garments

Meet with clinicians to improve their goals with constraints related to patient care and to discuss, demonstrate, and train on how lymphedema garments can improve patient outcomes



Develop relationships with customers at all levels



WrapAbility



Turn pressure into power

[Wrapability US](https://www.wrapability.com) | [Sigvaris.com](https://www.sigvaris.com)

Easy Ordering Guide!

What?

Easy Ordering Guide

Make it simple

- We developed an Easy Ordering Guide to make the process of finding and fitting your patients for garments as simple as possible
 - This is a click through document that is available in an Excel or PDF format
 - Print sizing sheets right from your computer
 - Leave the link on your desktop for easy access

sigvaris		Easy Ordering Guide	
UE GARMENTS	Uses	Sizing	Image Link
Secure Armsleeve	A sleeve for UE stage 2 lymphedema or greater; moderate swelling that requires management with a reduction garment or bandaging; moderate containment is provided with this garment. See UE tab for glove and gauntlet options.	Sizing Chart	Prod IMG
Secure Lite Armsleeve	For UE stage 0–1 lymphedema; for little to no edema. Ideal for patients with recent mastectomy, breast cancer patients worried about obtaining lymphedema, or patients who want a sleeve for air travel and exercise only; light containment. See UE tab for glove and gauntlet options.	Sizing Chart	Prod IMG
LE GARMENTS	Uses	Sizing	Image Link
Compreboot® Standard	Pairs well with the Compreflex Transition or the Compreflex Contain for management of foot edema. It is fairly low profile and can fit into some shoes. For the patient who requires minimal to moderate foot compression during or after the treatment phase.	Sizing Chart	Prod IMG

Why?

You Asked...

And we answered!



How can I make ordering easier?

Is there a better way to do this than copying pages from the catalog?

How can I keep straight what each product is for?

The catalog has too many products!

I already have enough stuff in my cabinets/car!

Streamlined.

Simplification

So many options!



Overwhelmed by
the amount of
options available
on the market

Using the same
products over and
over

Computers are an
essential part of
the day in ANY
setting

Easy print and fill
out to send to DME

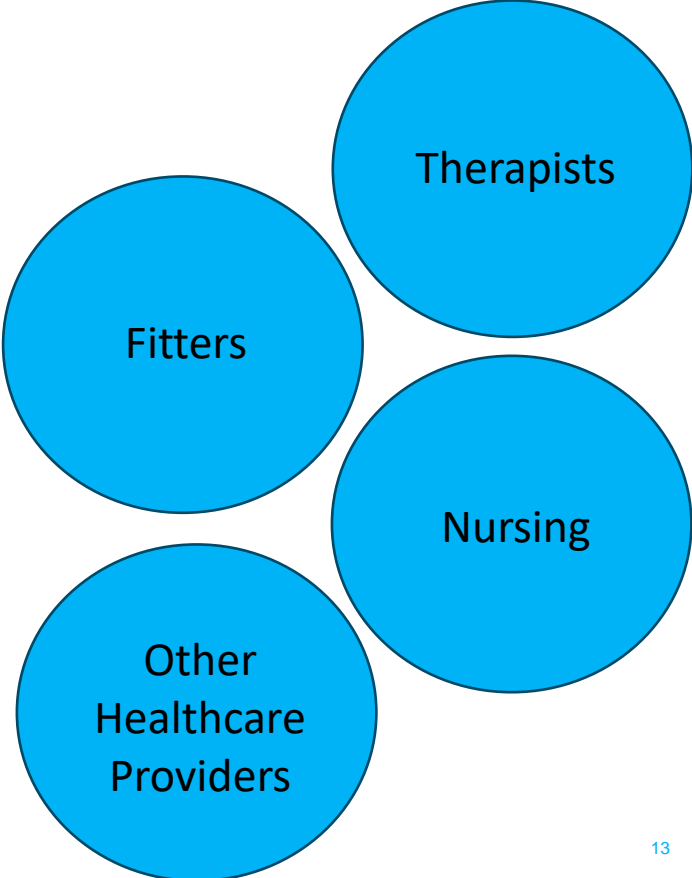
Improved ordering

Quick overview of
the reason for
garment use

Who?

User Friendly

Easy for all!



How?

The Basics

Excel and PDF



Review of the
documents



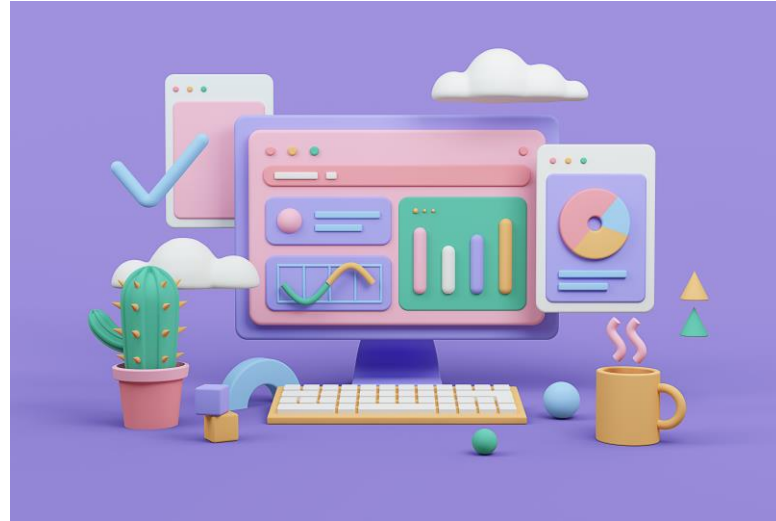
Differences



How to's



Best options
for use



sigvaris

Easy Ordering Guide

UE GARMENTS		Uses	Sizing	Image Link
Headings	Secure Armsleeve	A sleeve for UE stage 2 lymphedema or greater; moderate swelling that requires management with a reduction garment or bandaging; moderate containment is provided with this garment. See UE tab for glove and gauntlet options.	Sizing Chart	Prod IMG
	Secure Lite Armsleeve	For UE stage 0–1 lymphedema; for little to no edema. Ideal for patients with recent mastectomy, breast cancer patients worried about obtaining lymphedema, or patients who want a sleeve for air travel and exercise only; light containment. See UE tab for glove and gauntlet options.	Sizing Chart	Prod IMG
LE GARMENTS		Uses	Sizing	Image Link
	Compreboot® Standard	Pairs well with the Compriflex Transition or the Compriflex Contain for management of foot edema. It is fairly low profile and can fit into some shoes. For the patient who requires minimal to moderate foot compression during or after the treatment phase.	Sizing Chart	Prod IMG
	Compriflex® Contain Calf	For the lymphedema patient with stage 2 lymphedema or greater who has required bandaging or a reduction kit. The patient has limited calf shape/curve to the leg. The material is more containing than the Compriflex Transition and well suited as a post-decongestive phase garment.	Sizing Chart	Prod IMG
	Compriflex® (Standard, Transition and Complete)	This garment is well suited for CVI or wound patients during the active and maintenance phases. This garment has a moderate curve on the back to fit the shape of the leg and prevent gapping. It is also a Breathaprene material allowing for wicking of moisture to reduce wound complications.	Sizing Chart	Prod IMG
	Secure (lower extremity, men and women)	A compression sock that comes in 20–30 / 30–40 / 40–50 mmHg with silicone band. It is for well managed lymphedema, CVI, and lipedema patients. It is a moderately containing garment. It can be paired with a variety of donning/doffing aides.	Sizing Chart	Prod IMG

Link to measurement chart

Link to product photo

	A	B	C	D
1	sigvaris	Easy Ordering Guide		
2	UE GARMENTS	Uses	Sizing	Image Link
3	Secure Armsleeve	A sleeve for UE stage 2 lymphedema or greater; moderate swelling that requires management with a reduction garment or bandaging; moderate containment is provided with this garment. See UE tab for glove and gauntlet options.	Sizing Chart	Prod IMG
4	Secure Lite Armsleeve	For UE stage 0–1 lymphedema; for little to no edema. Ideal for patients with recent mastectomy, breast cancer patients worried about obtaining lymphedema, or patients who want a sleeve for air travel and exercise only; light containment. See UE tab for glove and gauntlet options.	Sizing Chart	Prod IMG
5	LE GARMENTS	Uses	Sizing	Image Link
6	Compreboot® Standard	Pairs well with the Compreflex Transition or the Compreflex Contain for management of foot edema. It is fairly low profile and can fit into some shoes. For the patient who requires minimal to moderate foot compression during or after the treatment phase.	Sizing Chart	Prod IMG
7	Compreflex® Contain Calf	For the lymphedema patient with stage 2 lymphedema or greater who has required bandaging or a reduction kit. The patient has limited calf shape/curve to the leg. The material is more containing than the Compreflex Transition and well suited as a post-decongestive phase garment.	Sizing Chart	Prod IMG

Headings

Link to measurement chart

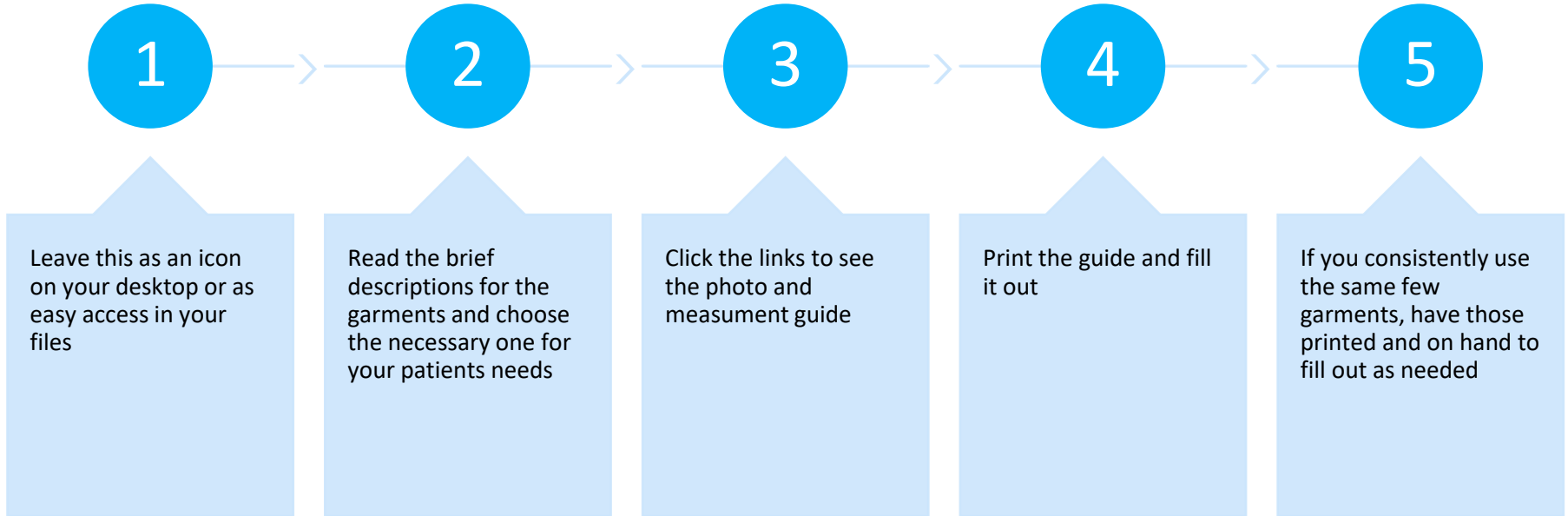
Link to product photo

Tabs

When and Where?

Implementation

Simplify measuring!



I've Lost My Link

Where can I find it?

- [SIGVARIS Assets](#) – EXCEL File
- [SIGVARIS Assets](#) – PDF File
 - To access both of these:
 - ➔ www.sigvaris.com
 - ➔ Menu icon on right side
 - ➔ Learning Hub
 - ➔ Scroll down to Easy Ordering Guide and both links appear!



Questions?

Thank you.



SIGVARIS
GROUP

SIGVARIS GROUP
is dedicated to **helping**
people feel their best.
Every day.